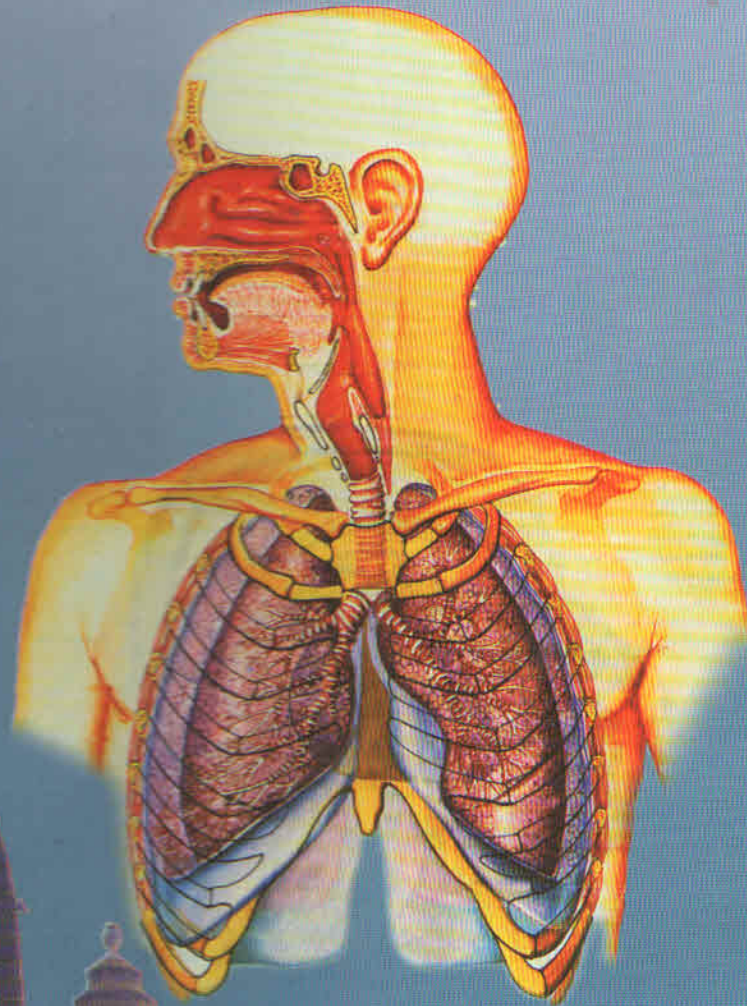




Souvenir

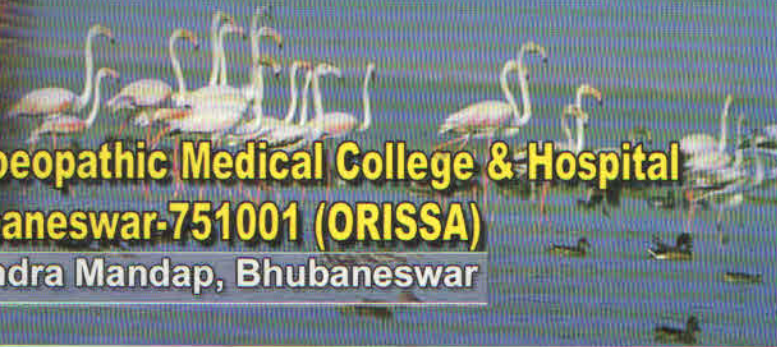
NATIONAL HOMOEOPATHIC SEMINAR
on
ACUTE RESPIRATORY TRACT INFECTION
22nd - 23rd February 2005



Organised By

Dr. Abhin Chandra Homoeopathic Medical College & Hospital
Unit-III, Bhubaneswar-751001 (ORISSA)

Venue : Rabindra Mandap, Bhubaneswar





ALLERGIC RHINITIS – A BIRDS EYE VIEW TO THE RARE DRUGS

Prof. (Dr.) L. K. Nanda*

M.D. (Hom.)



Allergy is an abnormal response of the tissues to certain material, often a protein, which is called allergen. This reaction results in the formation of specific antibody. In allergic subjects, in addition to these normal antibodies, special

form of antibodies (Reagin) are produced which gets fixed to tissue cells of the nasal and the bronchial mucosa. First introduction of the antigen produce characteristic features of allergy by reacting with these antibodies releasing histamine like substances and lead to dysfunction of cellular enzyme activity and subsequent tissue damage.

Hypersensitivity of the host depends on antigen dose, frequency of exposure, genetic make up, and hormone activity of the body.

Aetiology :

Prevalence Increases with Age
22.5% 6 to 15 years of Age.

Hereditary :

75 % of Asthmatic Children have it
Obstruction of the Nasal Passages

Both parents affected - 50 % risk due to Ig E response controlled by T & B Lymphocytes.

Peak in Childhood & Adolescence

Exciting factors :

a) Various seasonal antigens or perennial antigen

- i) Seasonal antigen: Pollen grains, Weeds
- ii) Perennial antigen: Allergens present throughout year

- Animal dander
- Cockroach derived protein
- Chemicals for industrial setting
- Dust
- Feather
- Food (crab, prawn, eggs)

Clinical Features :

1. Episodic Rhinorrhoea
2. Sneezing
3. Obstruction of nasal passages with lachrymation
4. Pruritus of the conjunctiva, nasal mucosa & oropharynx.
5. Nasal mucous membrane is pale & boggy.
6. Conjunctiva - congested & oedematous.
7. Swelling of the turbinate & the mucous membrane with obstruction of the sinus ostia & eustachian tube precipitates secondary infection of the sinus & middle ear respectively commonly in perennial but rarely in seasonal disease & causes headache.
8. Pain over per inasal sinuses.
9. Postnasal drip of nasal mucus can result in frequent attempts to clear the throat.

Physical Examination :

1. Allergic shiners - dark discolouration in the orbital & palpebral grooves beneath the lower eyelid.
2. Wrinkles below the lower eyelid.
3. Allergic Salam (Salute): Upward thrust of the nostrils by palm of the hand
4. Adenoid facies : mouth breathing, flat maxilla, recessed chin.
5. Excessive watering of eyes & long eye lashes.
6. Produces sounds of clearing throat or nose.
7. Geographic tongue seems more often in children with allergic rhinitis.

Miasmatic Assessment:

PSORA.

- * Nostrils stuffed up with dryness.
- * Anosmia.
- * Begins with sneezing, redness, heat & takes 2-3 days time to go down to start wheeze

*H.O.D., P.G. Deptt. of Materia Medica,
Dr. A.C.H. Medical College and Hospital,
Bhubaneswar.

SYPHILIS

- * Snuffles.
- * Ulceration of nostril. With Crust
- * Thick, dark green discharge.

SYCOSIS.

- * Babies of sycotic parents with persistent, obstinate snuffle & immediately starts wheezing.
- * Always breathes through mouth.

PSEUDO-PSORA.

- * Worst forms of Hay fever where discharges soon become thick, yellow, purulent, bloody & sometimes very cheesy odour.
- * Post nasal dropping.

Management

Constitutional Therapy: - Constitutional Medicines Found Effective

Medication For Acute Phase: - Acute Drugs Found Effective

Hay Fever Tends To AsthmaKALI IOD

- Constitutional
- Starts with sneezing, profuse watery acrid coryza with pain in frontal sinus.
- Cold travels downward to chest
- Larynx feels raw.
- Violent cough < morning with stitching pain from lungs to back.
- Expectoration - soap-sud, greenish.
- Dyspnoea.
- Tea tasters cough due to inhaling fungus

KALI NITRICUM

- Sneezing with itching and redness of nose.
- Polyp worse right nostril - leads to asthma.
- Excessive dyspnoea, unable to drink though thirsty, with nausea.
- Dull stitches and burning in chest.
- Expectoration sour smelling, bloody.
- < Veal, walking, cold damp weather, morning & afternoon.
- > Drinking sips of water.

PECTEN (SCALLOP):

- Asthma preceded by coryza and burning in throat and chest.
- Constriction felt mostly in right side.
- Ameliorated with tough, frothy copious expectoration.

ARALIA RACEMOSA:

- Frequent sneezing with rawness burning behind sternum.
- Tends to dry cough with tickling in throat.
- Asthma < 1st sleep, 11p.m, cold air.

SUCCINIC ACID:

- Paroxysmal sneezing with itching of eyelids, canthi and nose with watery discharge from nose - leads to Asthma. < Drafts.

IODUM

- Sneezing < open air.
- Cold extends downwards from head to throat to bronchi.
- Dry morning cough with difficult respiration
- Cough < indoor, warm wet weather, lying on back.

ARS.IOD

- Afternoon rise of temperature.
- Prostration.
- Recurrent fever & sweat.
- Emaciation.
- Hawking cough with stuffed up nostril.
- Cough with little expectoration, tubercular origin.

BADIAGA

- Sneezing, watery discharge.
- With asthmatic breathing and suffocative cough.
- Mucus flies out of mouth & nostril.
- < afternoon
- > Warm room.

NAPHTHALINE

- Sneezing.
- Eye painful.



- Spasmodic asthma.
- Soreness in chest & stomach must loosen clothing.
- > open air.
- Free flow of saliva from mouth.
- 2x mostly specific (Cartier)

Rhinitis / Asthma with Urticaria

LINUM USITATISSIMUM

- Rhinitis, urticaria and asthma when all are prominent in any case of respiratory allergy.
- Irritation of nose with itching, heat and burning of nostril.
- Complete obstruction of nose.
- Urticaria.

SKOOKUM CHUK

- Hay fever with profuse coryza and constant sneezing.
- With urticaria, eczema & otitis media.

Hay Fever / Allergic Rhinitis

ARUNDO

- Severe itching of conjunctiva, palate & nostril with sneezing.
- Loss of sleep.
- Desire sour.

ARUM TRIP.

- Acrid discharge with soreness of nostrils.
- Obstruction of nose.
- Boring of finger into nostrils.
- < Lying down.
- Posterior nares affected.

SANG.NIT.

- Obstruction of nose with watery mucus & burning pain.
- Postnasal bloody, sticky secretion adhered to naso-pharynx.
- Both for acute & chronic affections.
- Pressure over root of nose.
- Rawness, soreness of posterior nares.

- Hawking cough with expectoration of thick yellow, sweetish mucus.
 - < night. > nasal discharge(headache).
- Chronic nasal, laryngeal, bronchial catarrh.

SINAPIS NIGRA.

- Hay fevers, coryza.
- Pharyngitis.
- Stoppage of left nostril or alternately.
- Mucus membrane is dry, hot, no discharge.
- < Afternoon & evening.
- Cough > lying down.

BERYLLIUM

- Seasonal rhinitis / Hay fever.
- Acute & chronic rhinitis.
- Like All.cepa > in open air. < Warm room.
- Cough < smoking.
- Cough with pain behind sternum.

CALC PHOS

- Best for Adenoid vegetation (R.T. Cooper)

Respiratory Allergy With More Pathology On Throat Symptoms.

WYETHIA

- Symptoms of Hay fever with marked itching of posterior nares.
- Posterior nares dry, burning & itching.
- Difficult swallowing.
- Constant desire to clearing & hemming but no relief.

HIPPOZAENIUM

- Chronic rhinitis.
- Nose red, swollen.
- Catarrh, ozaena, ulceration.
- Discharge acrid, corroding, bloody & offensive.
- Bronchial asthma (usually for aged where suffocation is from excessive secretion- Aur.met, kali.b).

HEPATIC A

- Tickling, irritation of throat, pharyngeal catarrh.
- Scrapping and raw sensation.



- Viscid, thick, tenacious, sweetish, creamy phlegm causes continued hawking.
- Induces free and easy expectoration.

Asthma With Other Concomitant Problems.

JUNCUS

- Asthmatic symptoms in haemorrhoidal subjects(Nux. Vom).
- Bubbling sensation in abdomen and chest.

Respiratory Allergy With Eustachian Tube Pathology.

ROSA DAMASCENA

- Beginning of Hay fever with eustachian catarrh causing hardness of hearing and tinnitus(Merc.dulcis, Hydras.).

MENTHOL

- Acute nasal catarrh. * Tickling in fauces.
- Eustachian catarrh. * Short, dry cough with dyspnoea < smoking.
- Pharyngitis, laryngitis. * Asthma with congestive headache.
- Post nasal dripping.

Respiratory Allergy More Confined to Ocular Manifestations.

EUPHRASIA.

- < Evening, warmth, south wind.
- > dark, coffee.

AMBROSIA

- Sneezing with lachrymation & intolerable itching of eyelids.
- Epistaxis.
- Wheezy cough.

Asthma Better From Expectoration

HYPERICUM.

- < Weather change, before storm.
- > copious expectoration.
- Scrapping, roughness in larynx, pharynx, sinuses.

ERIODYCTION.

- Asthma with coryza and mucus secretion.

- Asthma relieved by expectoration.
- With night sweat.
- Poor appetite with impaired digestion.
- Burning in fauces.

ZINC.MET.

- Asthmatic bronchitis with constriction of chest.
- > as soon as expectoration appears.
- Burning pressure beneath the sternum, constriction & cutting in chest.
- < eating sweets, 5-7p.m. > eating.

Asthma From Specific Allergens.

EGG VACCINE:

- Introduced by F.talbot.
- Asthma due to protein part of egg.
- Repeated dose required.

SOLIDAGO.

- Hay fever when solidago(pollen) is the exciting cause.
- Irritation of nose with sneezing and abundant mucous secretion.
- Expectoration purulent, blood streaked.
- Asthma with nightly dysuria.
- Repeated cold of tuberculosis.

SOLANUM LYCOPERSICUM.

- Hay fever < from breathing least dust.
- Hoarseness with constant desire to clear the throat.
- Worse right side, open air.
- > warm room.

DULCAMARA.

- Hay fever from newly mown grass.

AILANTHUS.

From smell of flowers.

POTHOS.

- Asthma from dust exposure (Kali.c, Blatta.o, Solanum.l).
- Asthma relieved by stool.



BLATTA.O.

- Asthma from dust exposure.
- < ascending stairs, rainy season.

Conclusion:

Around 40% of cases are responding to indicated constitutional polychrest in millisemal potency in frequent repetition. In Allopathy the medicines act as palliative. If the constitutional medicines doesn't cover the symptoms of acute attack, the acute symptom modalities and concomitants are to be observed minutely & the above drugs may be selected basing on this acute totality and prescribed. In those cases constitutional medicines are to be prescribed after the acute attack is over. In that case the above rare medicines with indications will be of helpful and more indicated symptoms, it may lead to cure.

Bibliography :

1. A Pocket Manual of Homoeopathic Materia Medica by William Boericke, Revised and

augmented Edition 1991, Published by B. Jain Publishers, New Delhi.

2. A Quick Bed Side Prescriber by J. N. Shinghal, Published by B. Jain Publishers, New Delhi.
3. Dictionary of Practical Materia Medica by J. H. Clarke, Reprint Edition 1985, Published by B. Jain Publishers, New Delhi.
4. Key notes and Characteristics with comparison of some leading remedies of Materia Medica, by H. C. Allen, Published by Indian Books and Periodicals Publishers, New Delhi.
5. Practical Homoeopathic Therapeutics by W. A. Dewey, Reprint Edition 1993, Published by B. Jain Publishers, New Delhi.
6. Fundamentals of Ear, Nose & Throat diseases and Head - Neck Surgery by Dr. Shyamal Kumar de.



If you land a fortune don't go on buying spree and there by become a consumer. A life long goal should help you to continue to be a producer. Use wealth to add your knowledge & capacity to produce more.

— Homi Kharres.